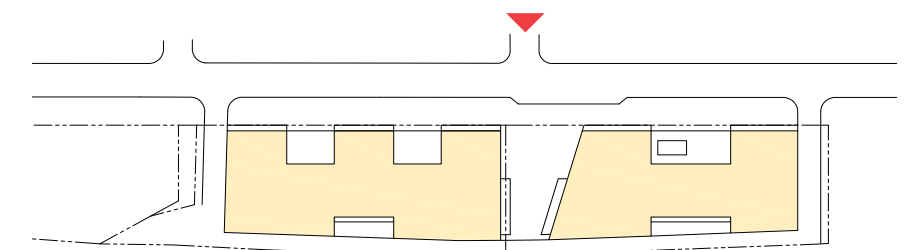




MATERIALS LEGEND

- | | | |
|--------------------|-----------------------------|------------------------------|
| 1.1 Masonry #1 | 3.1 Bronze Vinyl windows | 4.1 Metal railing |
| 1.2 Masonry #2 | 3.2 Metal storefront system | 4.2 Metal screen |
| 1.3 Masonry #3 | 3.3 Metal door system | 4.3 Metal canopy |
| 2.1 Stucco #1 | 3.4 Roll up door | 4.4 Wood finish metal accent |
| 2.2 Stucco #2 | | 4.5 Corrugated metal panel |
| 2.3 Stucco #3 | | 5.1 Signage |
| 2.4 Metal Panel #1 | | |

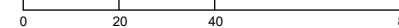


Architecture + Planning
888.456.5849
ktgy.com



HANOVER 8TH STREET
WASHINGTON, DC # 2014-0339

CONSOLIDATED PUD SUBMISSION
FEBRUARY 25, 2018



ELEVATIONS
WEST
ZONING COMMISSION
District of Columbia
CASE NO.18-21
EXHIBIT NO.15A3

A24

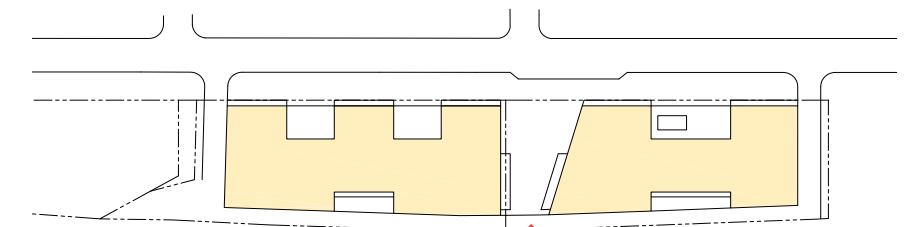


MATERIALS LEGEND

- 1.1 Masonry #1
- 1.2 Masonry #2
- 1.3 Masonry #3
- 2.1 Stucco #1
- 2.2 Stucco #2
- 2.3 Stucco #3
- 2.4 Metal Panel #1

- 3.1 Bronze Vinyl windows
- 3.2 Metal storefront system
- 3.3 Metal door system
- 3.4 Roll up door

- 4.1 Metal railing
- 4.2 Metal screen
- 4.3 Metal canopy
- 4.4 Wood finish metal accent
- 4.5 Corrugated metal panel
- 5.1 Signage

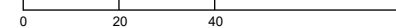


Architecture + Planning
888.456.5849
ktgy.com



HANOVER 8TH STREET
WASHINGTON, DC # 2014-0339

CONSOLIDATED PUD SUBMISSION
FEBRUARY 25, 2018



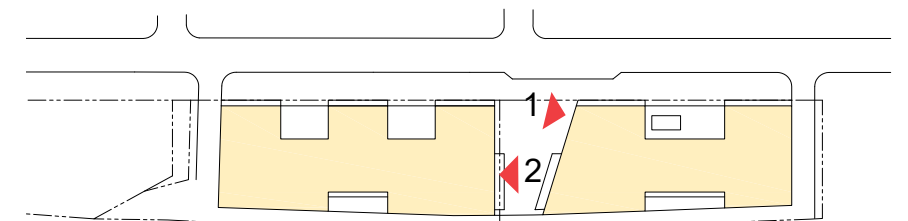
ELEVATIONS
EAST

A25



MATERIALS LEGEND

- | | | |
|--------------------|-----------------------------|------------------------------|
| 1.1 Masonry #1 | 3.1 Bronze Vinyl windows | 4.1 Metal railing |
| 1.2 Masonry #2 | 3.2 Metal storefront system | 4.2 Metal screen |
| 1.3 Masonry #3 | 3.3 Metal door system | 4.3 Metal canopy |
| 2.1 Stucco #1 | 3.4 Roll up door | 4.4 Wood finish metal accent |
| 2.2 Stucco #2 | | 4.5 Corrugated metal panel |
| 2.3 Stucco #3 | | 5.1 Signage |
| 2.4 Metal Panel #1 | | |



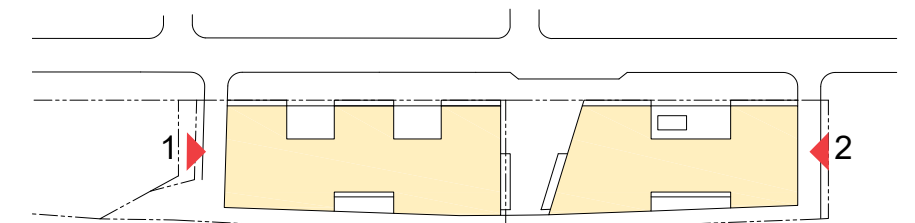


MATERIALS LEGEND

- 1.1 Masonry #1
- 1.2 Masonry #2
- 1.3 Masonry #3
- 2.1 Stucco #1
- 2.2 Stucco #2
- 2.3 Stucco #3
- 2.4 Metal Panel #1

- 3.1 Bronze Vinyl windows
- 3.2 Metal storefront system
- 3.3 Metal door system
- 3.4 Roll up door

- 4.1 Metal railing
- 4.2 Metal screen
- 4.3 Metal canopy
- 4.4 Wood finish metal accent
- 4.5 Corrugated metal panel
- 5.1 Signage

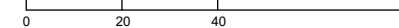


Architecture + Planning
888.456.5849
ktgy.com



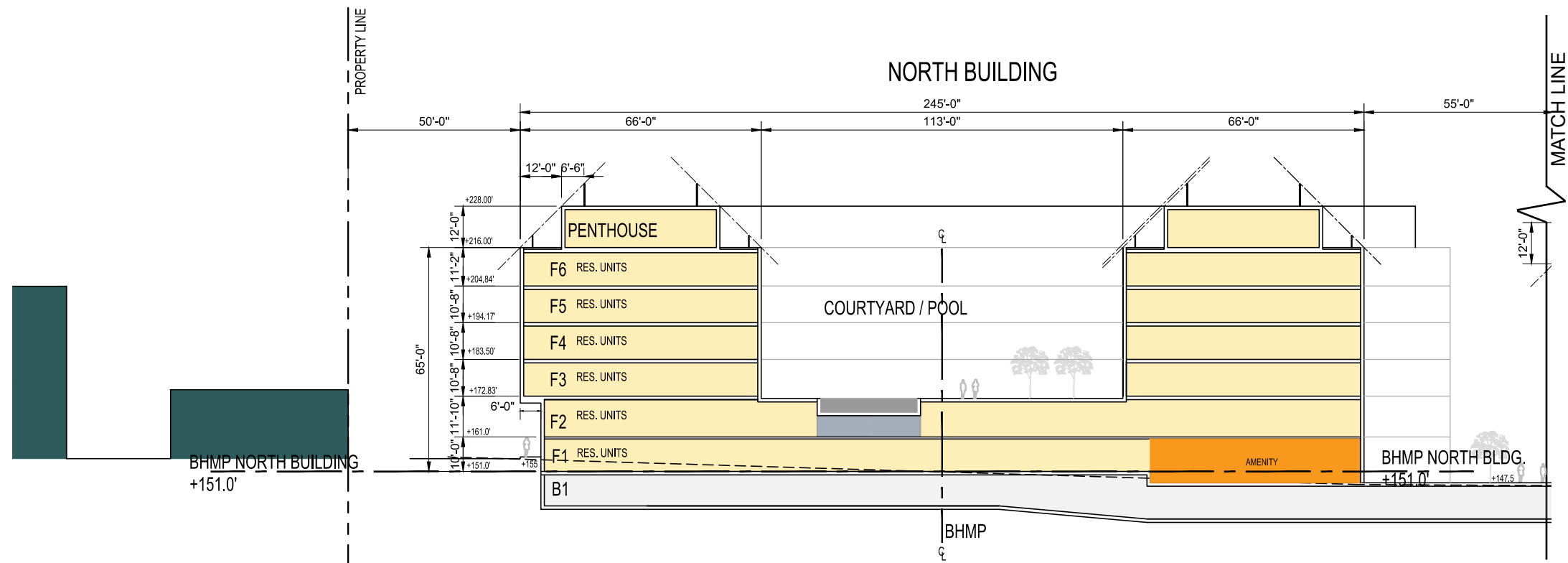
HANOVER 8TH STREET
WASHINGTON, DC # 2014-0339

CONSOLIDATED PUD SUBMISSION
FEBRUARY 25, 2018

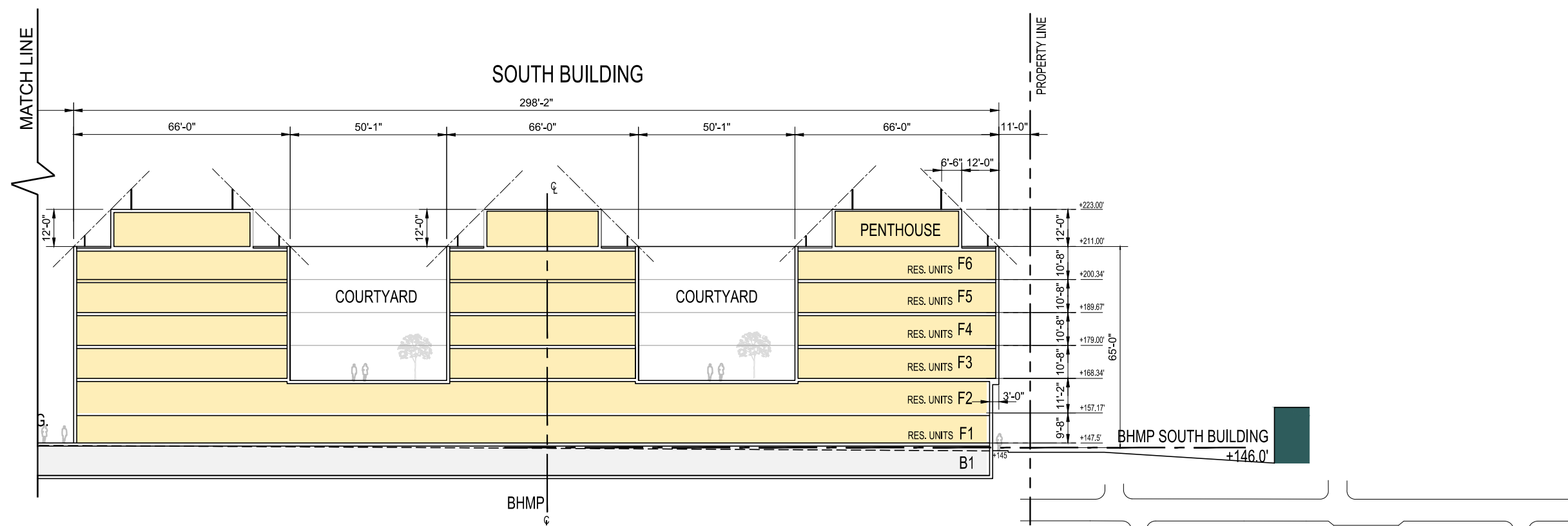


ELEVATIONS
NORTH / SOUTH

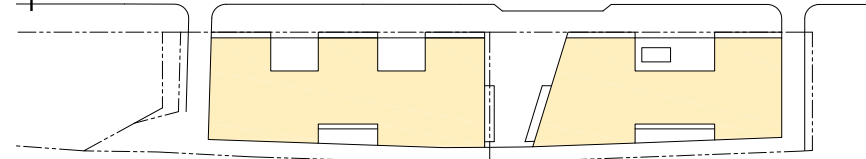
A27

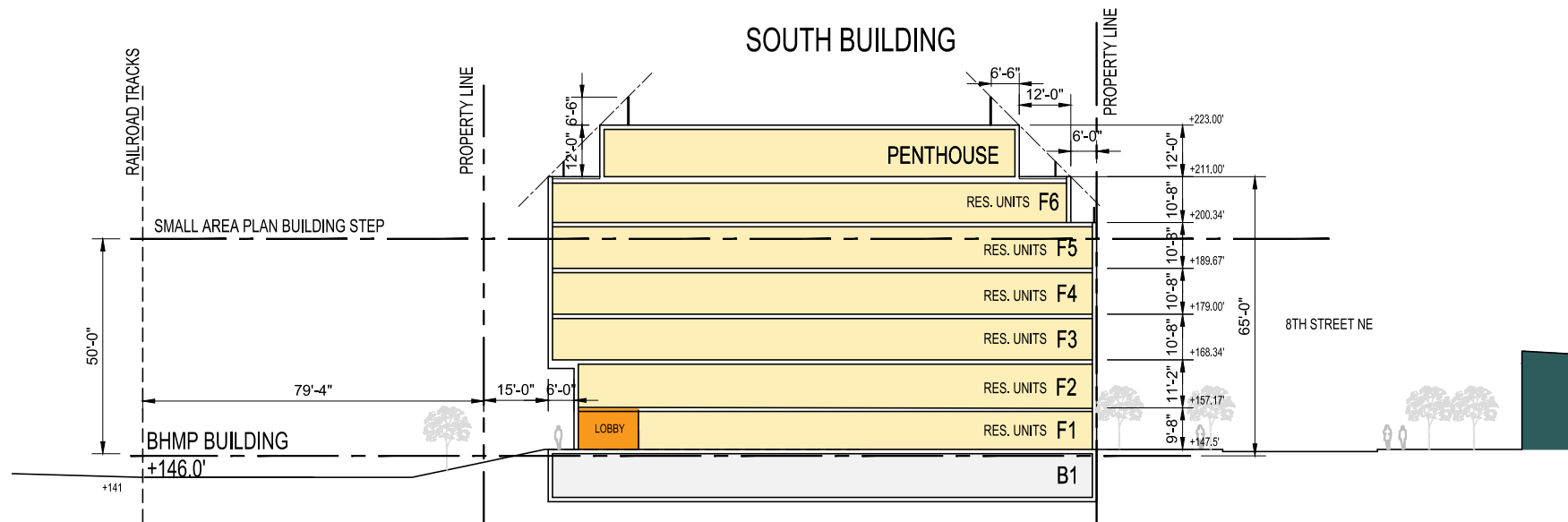


LONGITUDINAL NORTH SECTION BUILDING B

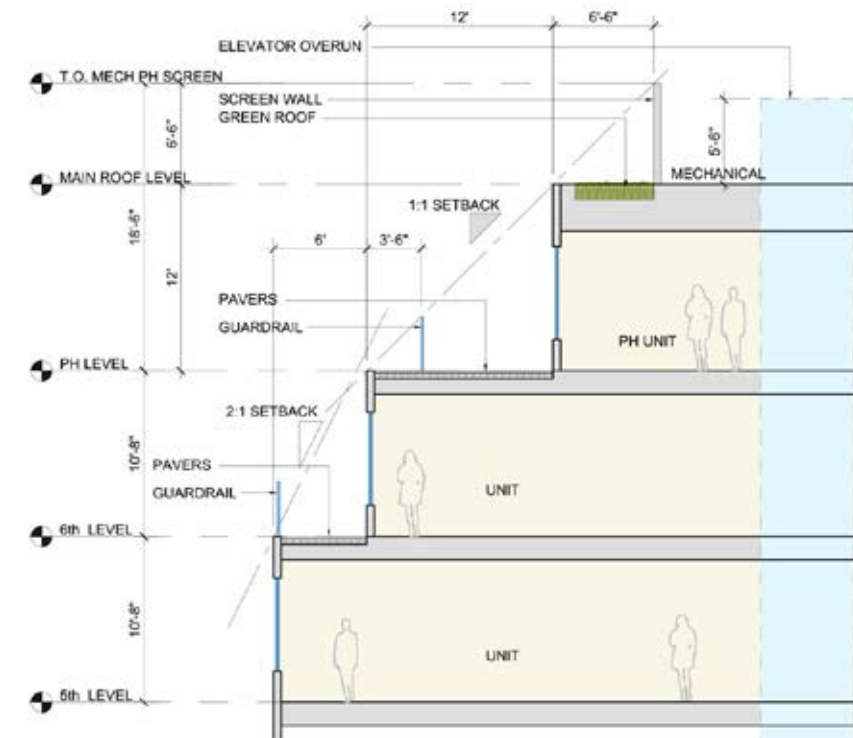


LONGITUDINAL SOUTH SECTION BUILDING A

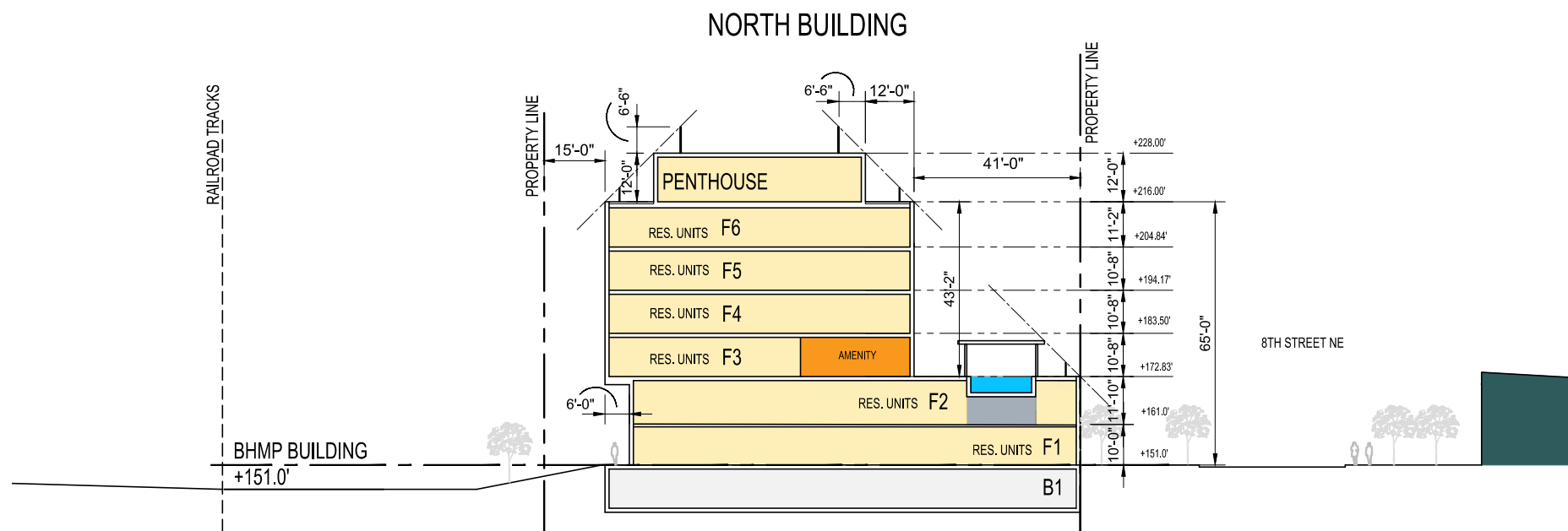




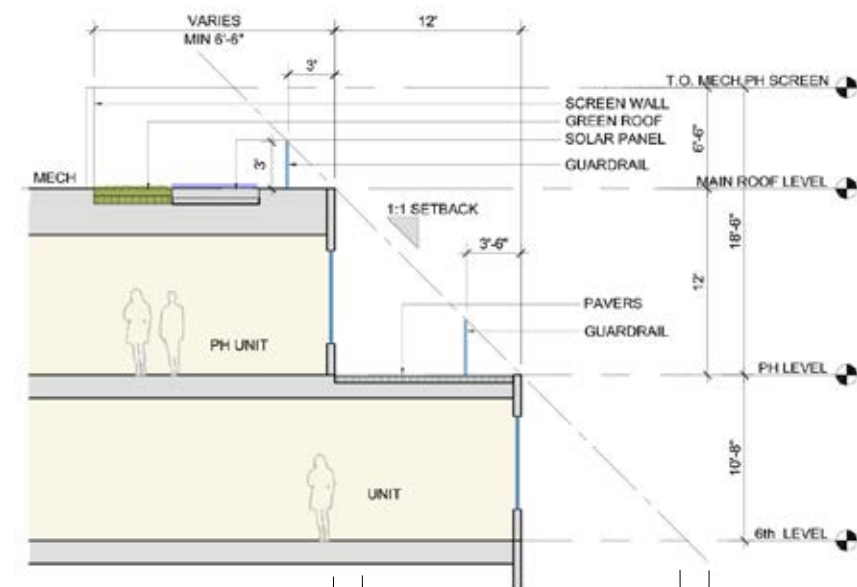
CROSS SECTION WEST-BUILDING SOUTH



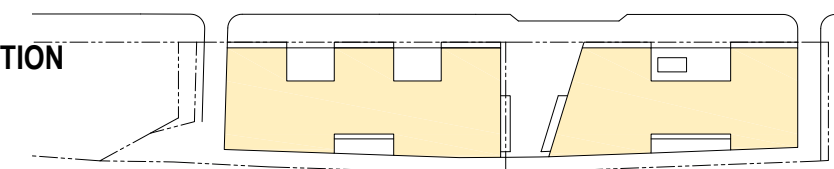
ENLARGED SECTION



CROSS SECTION WEST- BUILDING NORTH



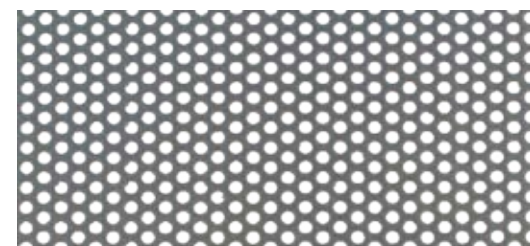
ENLARGED SECTION





MATERIALS LEGEND

- 1.3 Masonry #3
- 2.4 Metal Panel #1
- 4.2 Metal Screen Perforated Metal
- 4.5 Corrugated Metal Panel



4.2 Metal Screen Perforated Metal



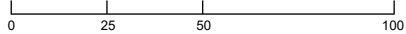
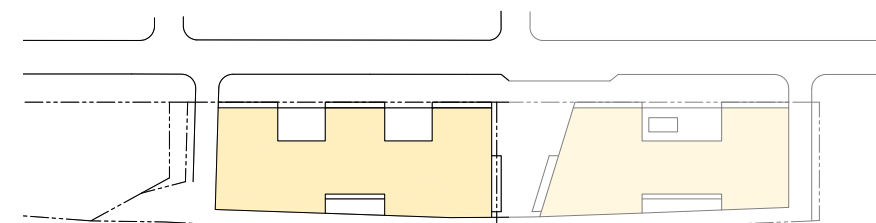
4.5 Corrugated metal panel



2.4 Metal Panel Color #1



1.3 Masonry #3



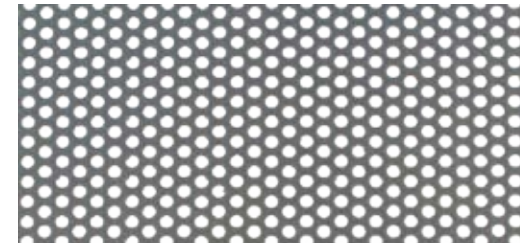
ENLARGED ELEVATION
SOUTH BUILDING

A30



MATERIALS LEGEND

- 1.1 Masonry #1
- 2.4 Metal Panel #1
- 4.2 Metal Screen Perforated Metal
- 4.5 Corrugated Metal Panel



4.2 Metal Screen Perforated Metal



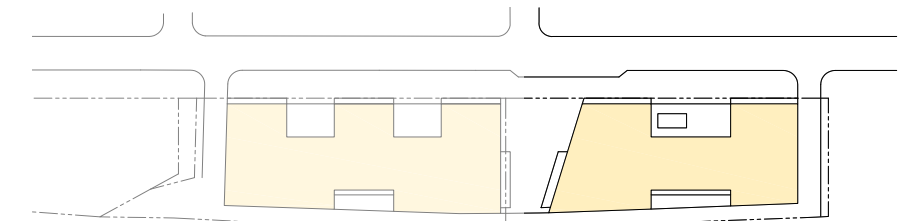
4.5 Corrugated metal panel



2.4 Metal Panel Color #1



1.1 Masonry #1



1.1 Masonry #1



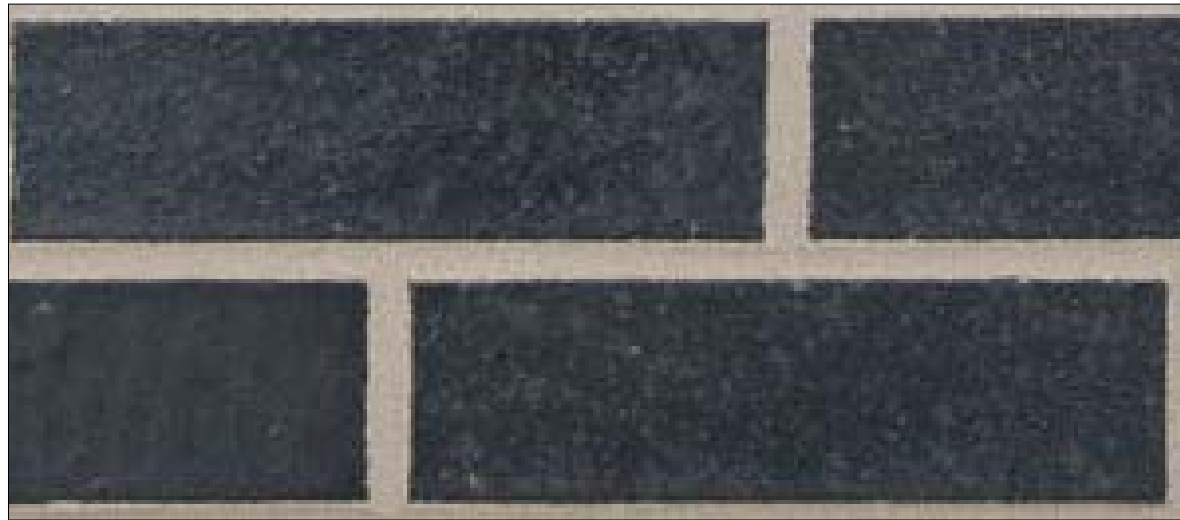
1.3 Masonry #3



4.4 Wood finish metal accent



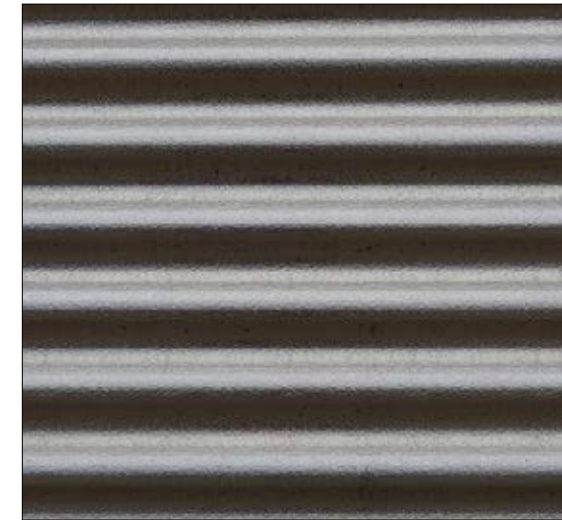
1.2 Masonry #2



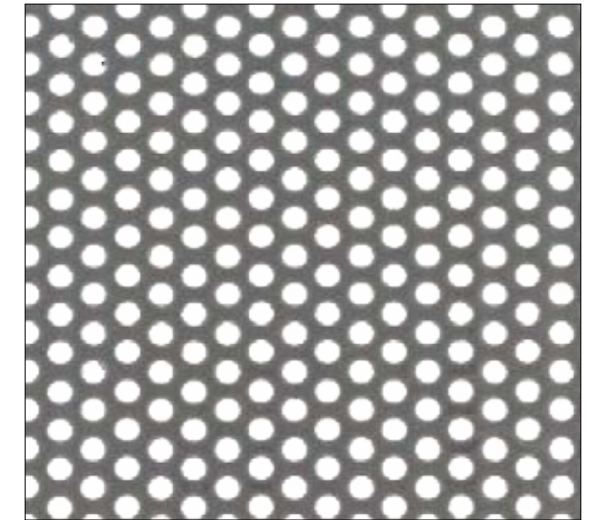
2.4 Metal panel #1



4.5 Corrugated metal panel



4.2 Perforated metal screen



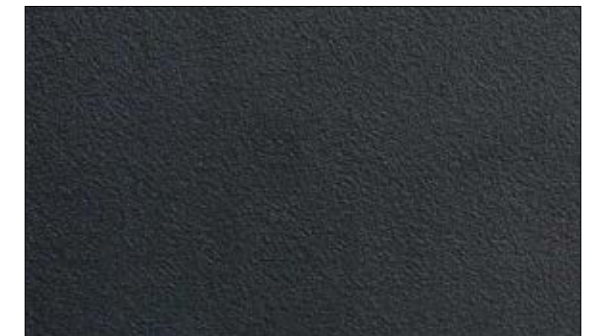
2.1 Stucco #1



2.2 Stucco #2



2.3 Stucco #3



1



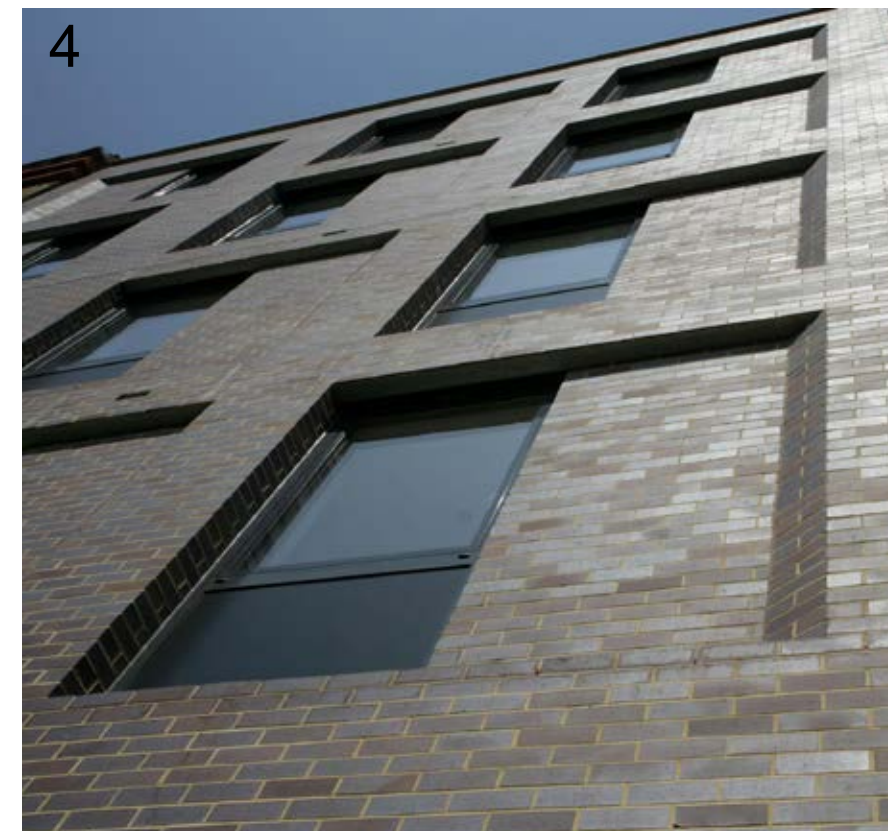
2

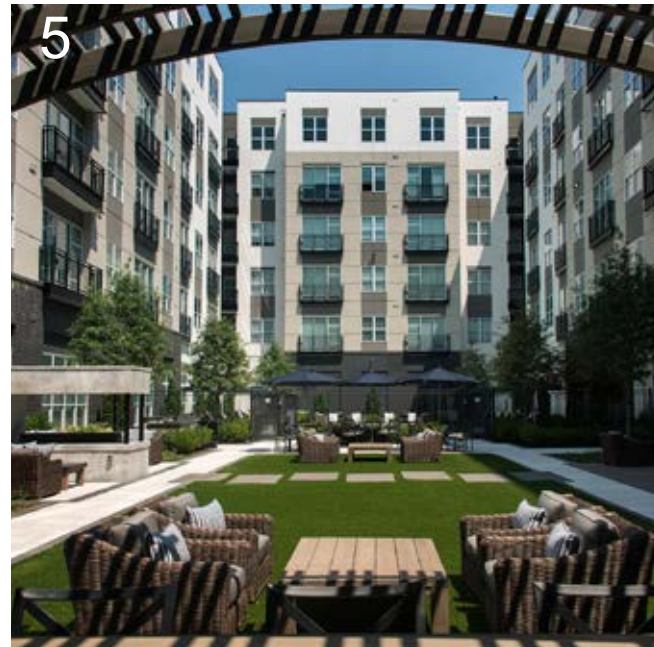


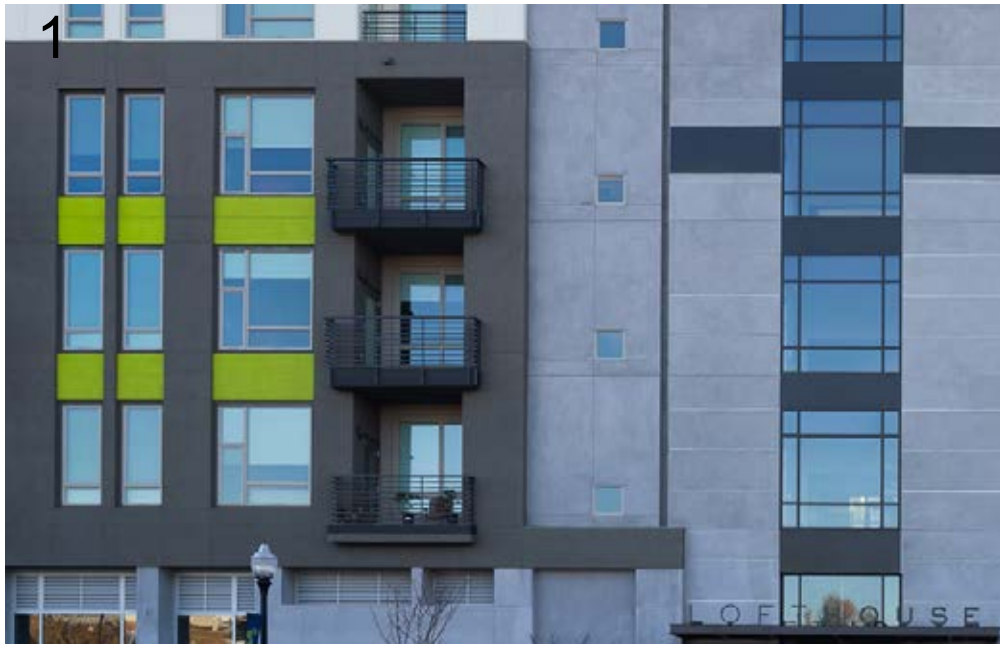
3



4







Adobe



Black



Bronze



Silver



Dove Gray



White



1 High Building ID



2 High Building ID

High Building ID



Main Canopy ID



NOTE: The exterior signage is preliminary and shown for illustrative purposes. The residential signage, including typface, color and message, may be modified so long as the signage is no larger than depicted in these plans and its location remains as reflected in the plans.



3 Main Canopy ID



Landscape Exhibits

THIS PAGE INTENTIONALLY LEFT BLANK

HANOVER 8TH STREET

L A N D S C A P E

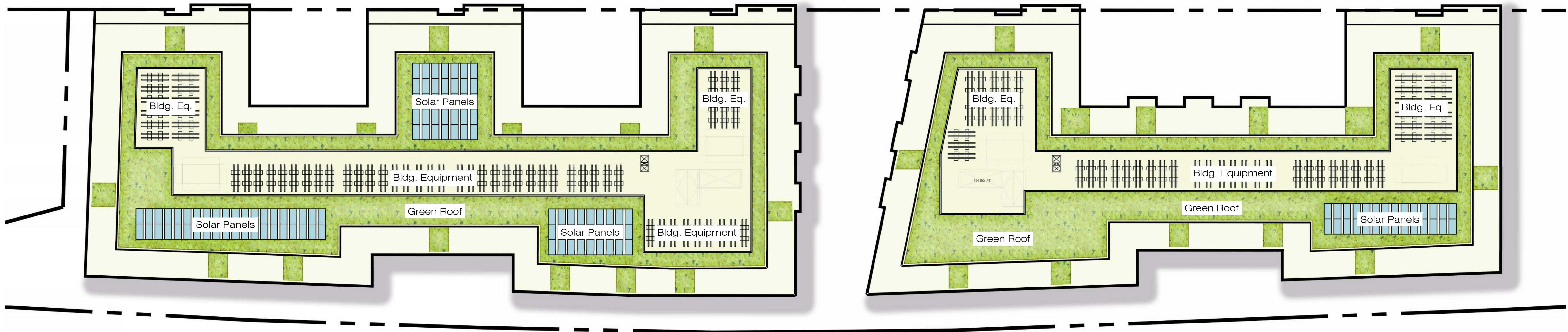


Architecture + Planning
888.456.5849
ktgy.com

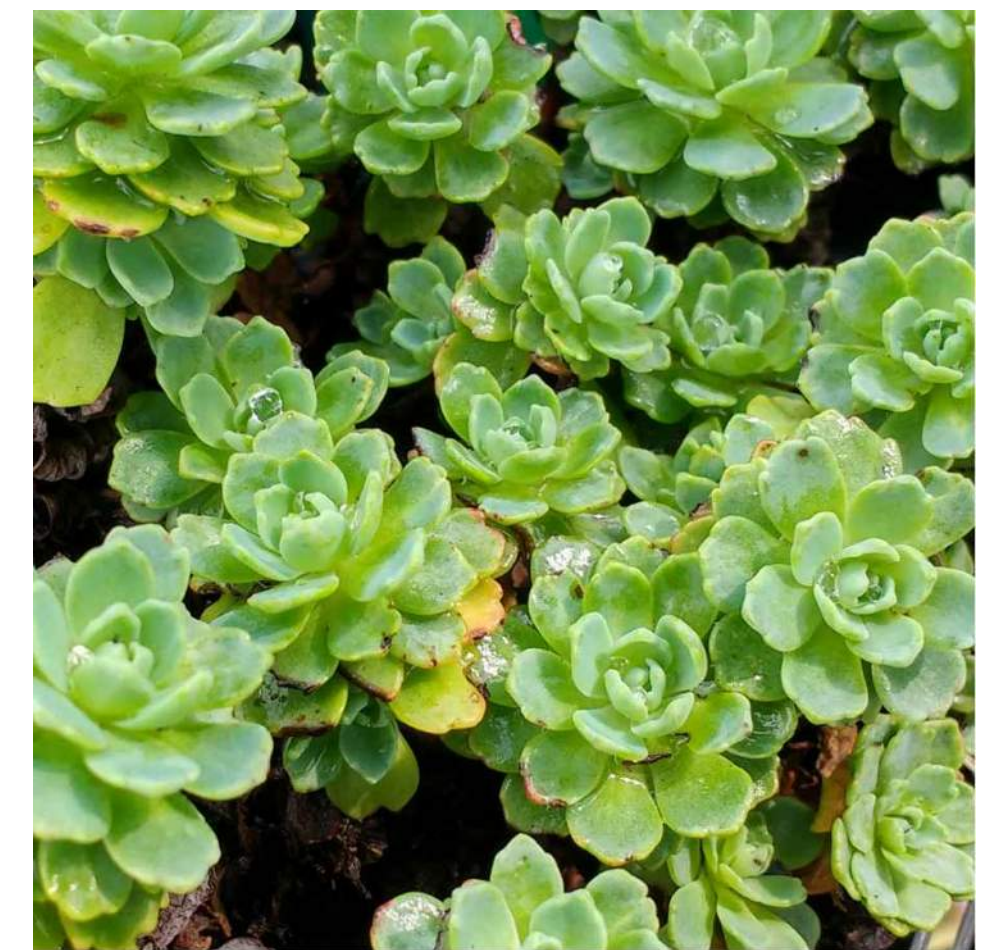
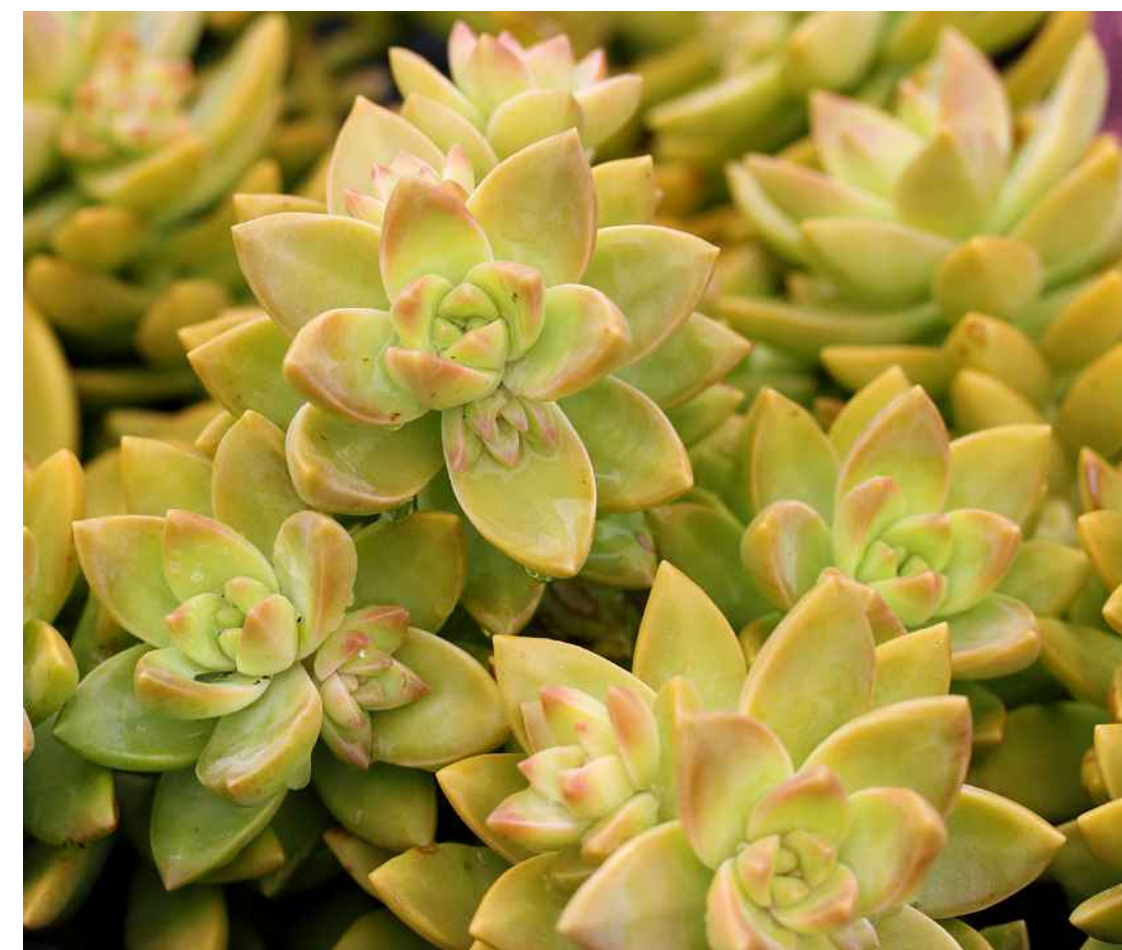


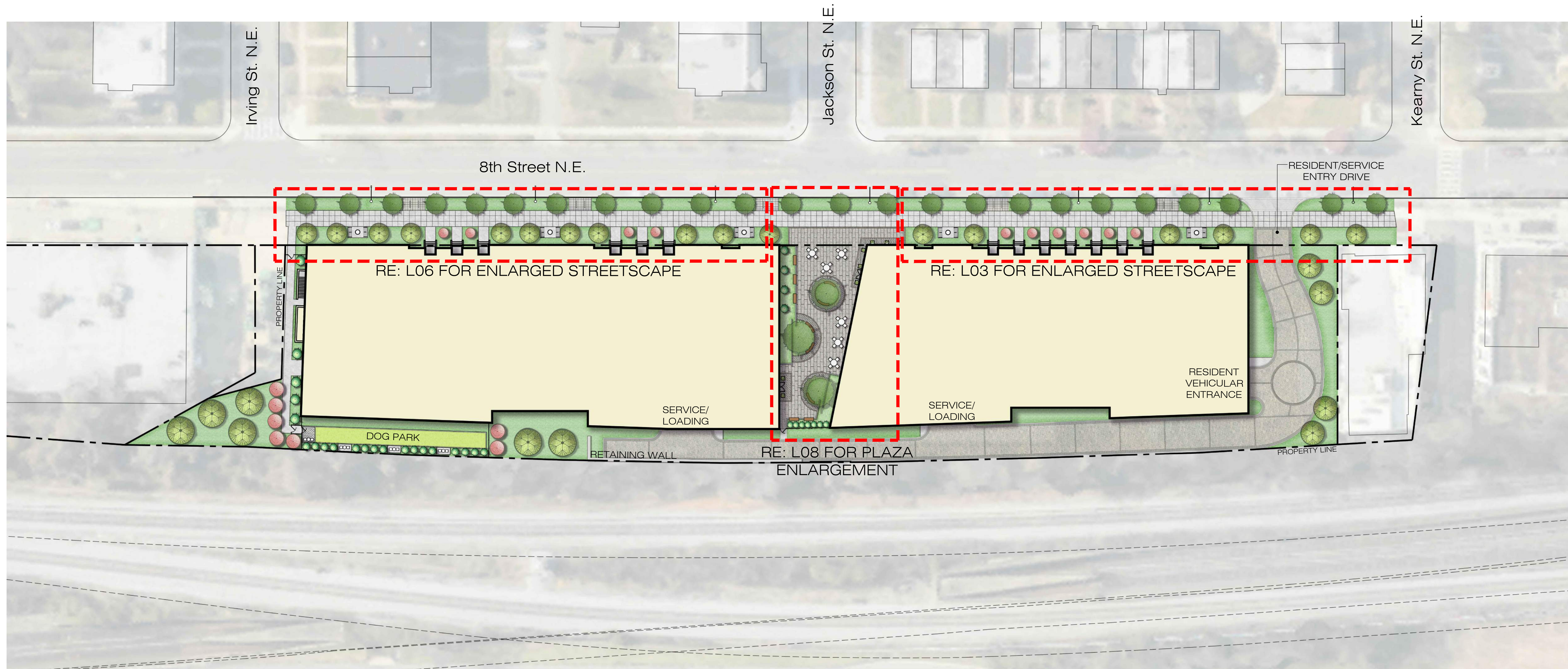
HANOVER 8TH STREET
WASHINGTON, DC # 2018-0430

PUD CONSOLIDATED SUBMISSION
February 25, 2019



EXAMPLES OF TYPICAL GREEN ROOF PLANTING MATERIAL





* THE IMPROVEMENTS IN PUBLIC SPACE ARE SUBJECT TO FINAL APPROVAL BY DDOT THROUGH THE PUBLIC SPACE PERMITTING APPROVAL PROCESS

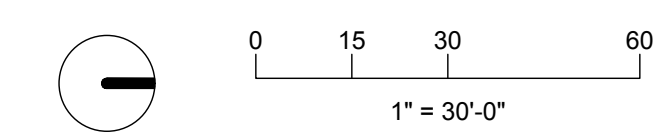


Architecture + Planning
888.456.5849
ktgy.com



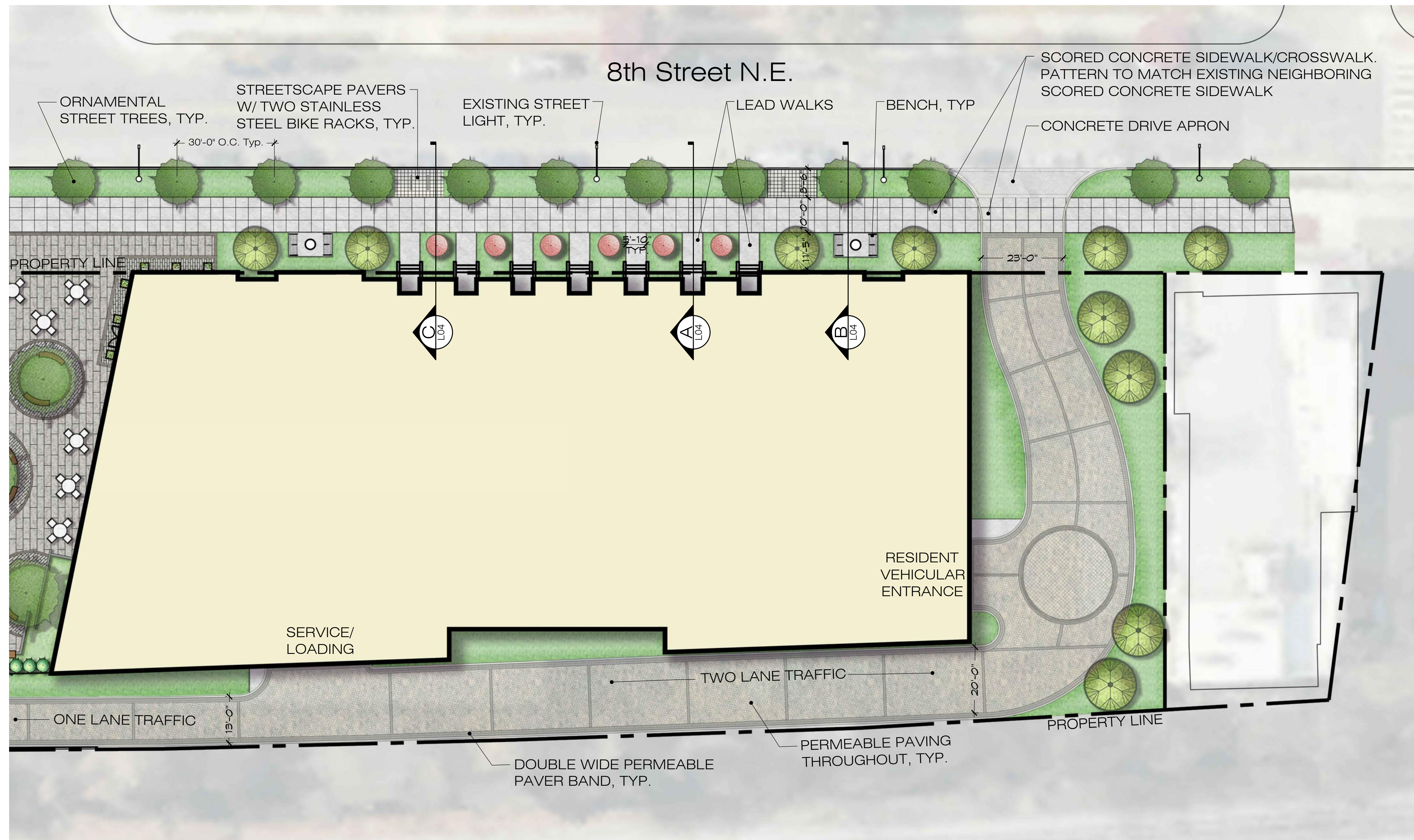
HANOVER 8TH STREET
WASHINGTON, DC # 2018-0430

PUD CONSOLIDATED SUBMISSION
February 25, 2019



OVERALL SITE PLAN

L02



* THE IMPROVEMENTS IN PUBLIC SPACE ARE SUBJECT TO FINAL APPROVAL BY DDOT THROUGH THE PUBLIC SPACE PERMITTING APPROVAL PROCESS

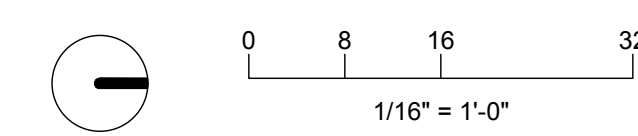


Architecture + Planning
888.456.5849
ktgy.com



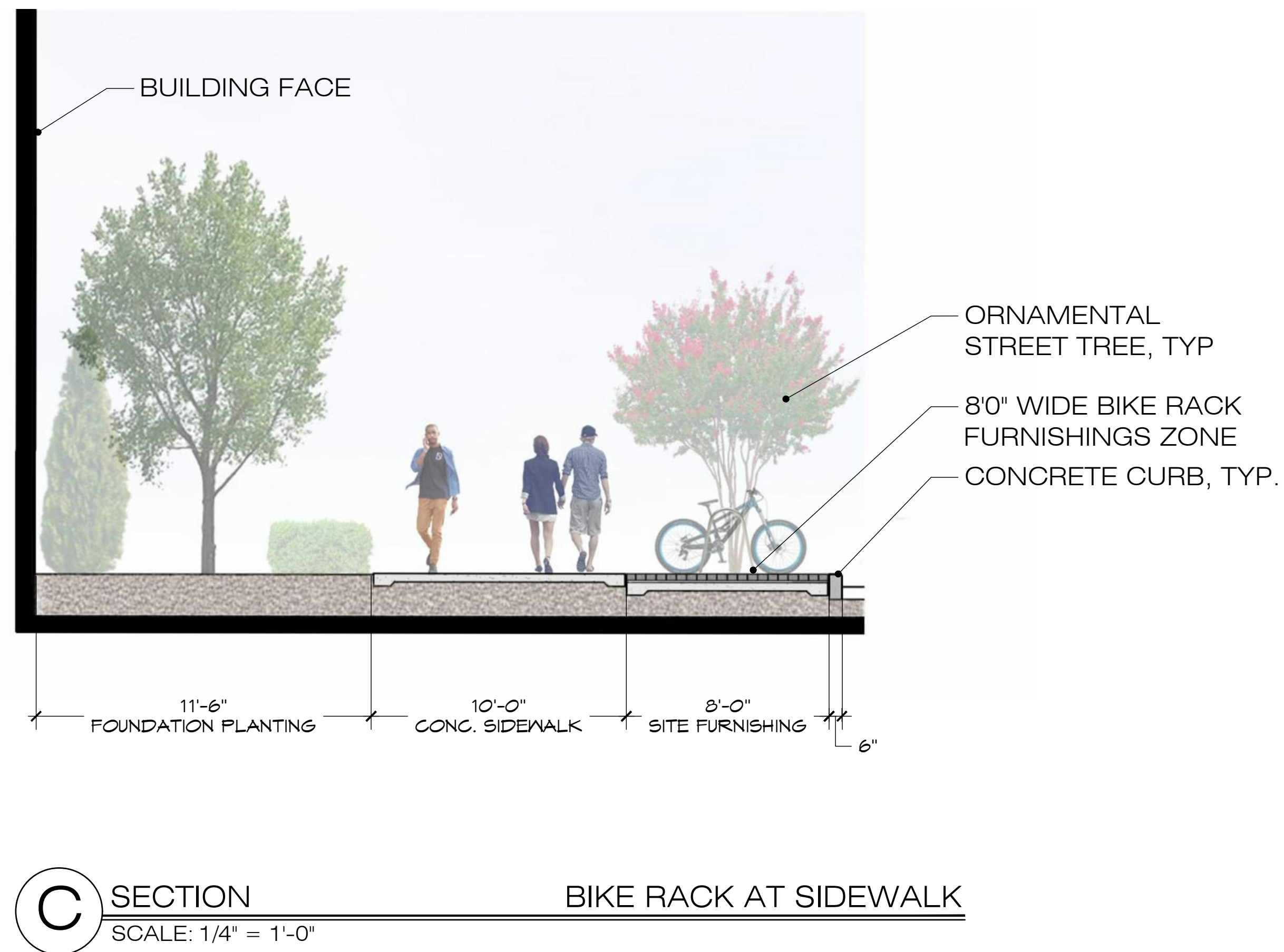
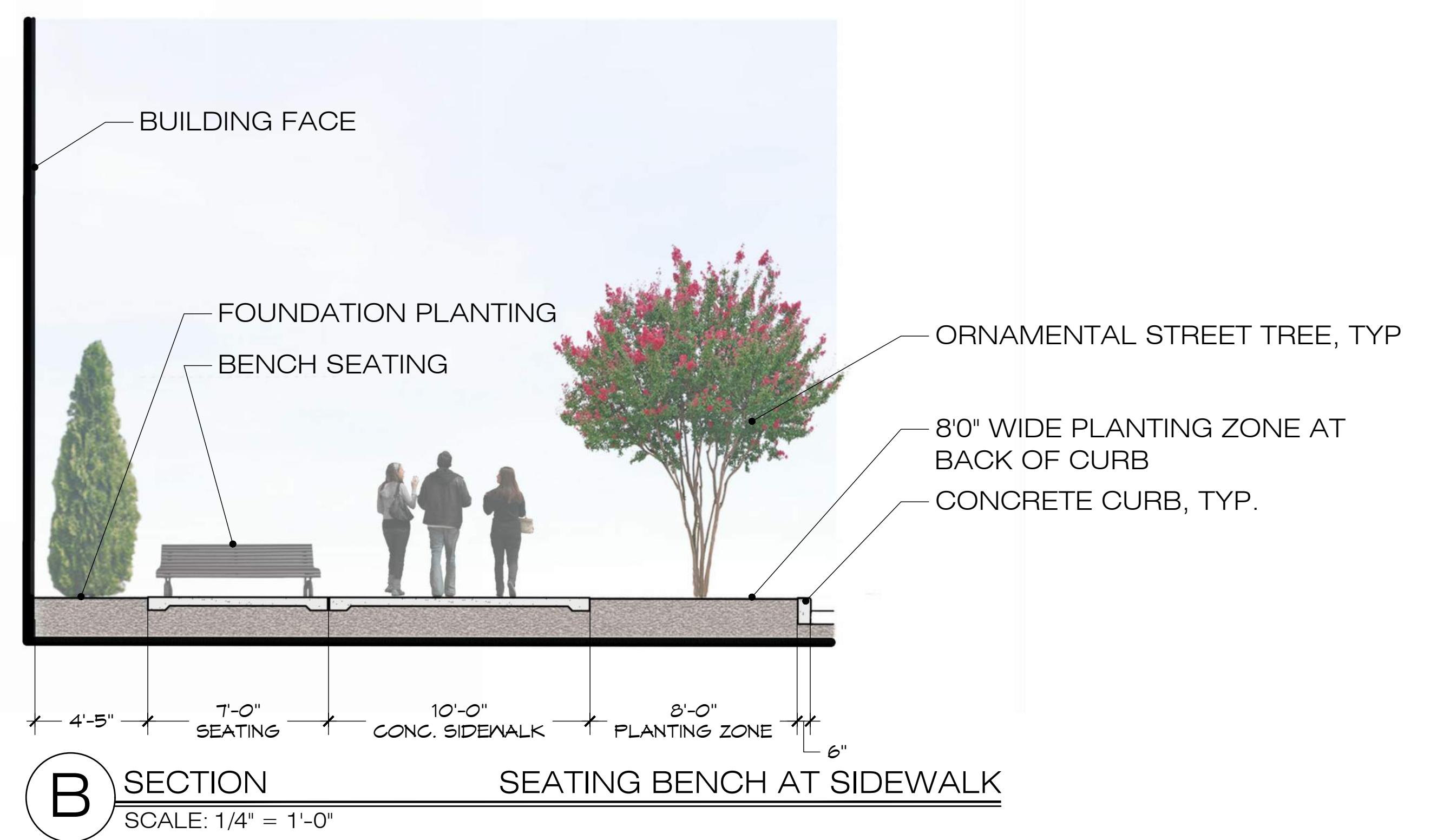
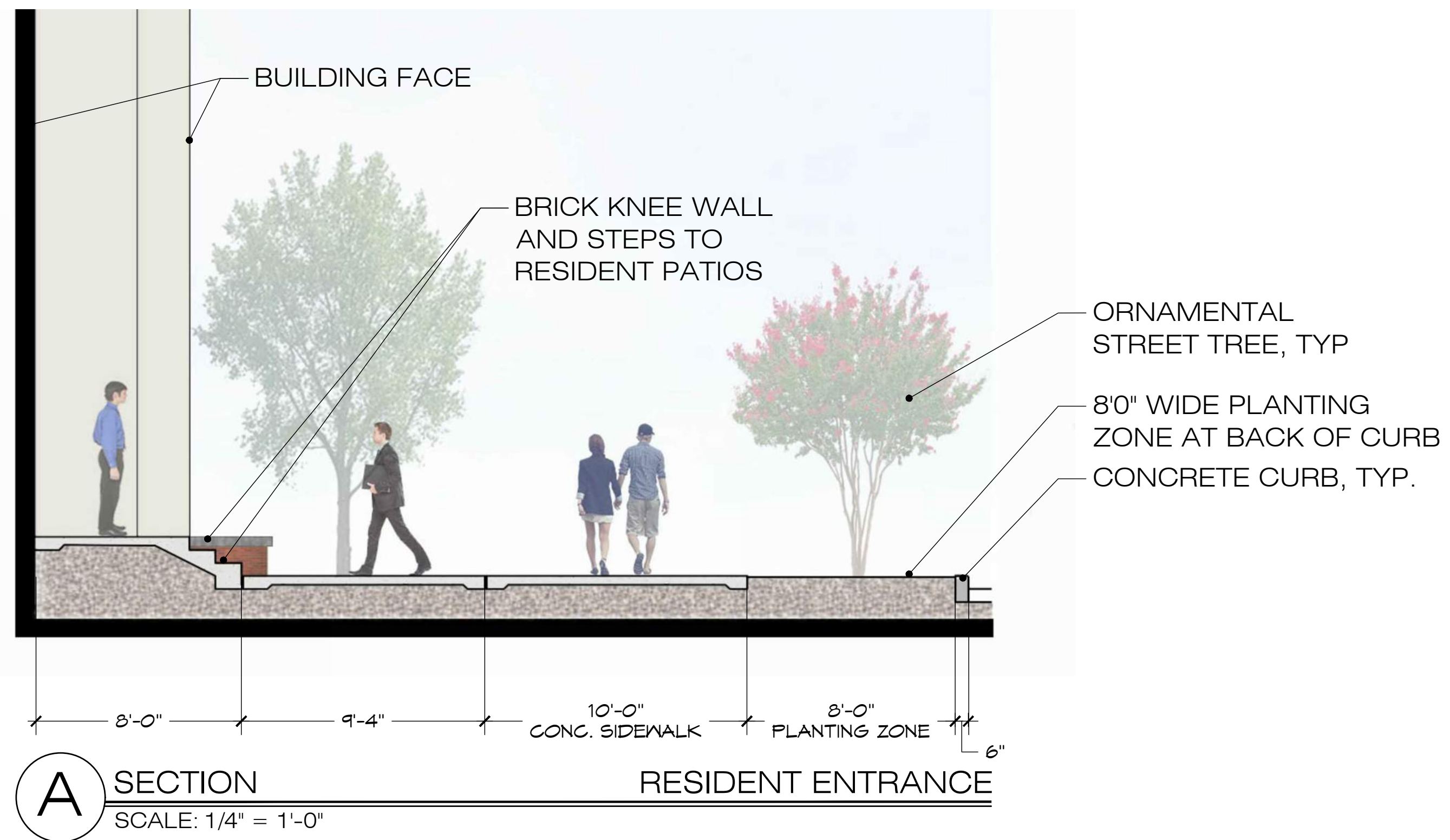
HANOVER 8TH STREET
WASHINGTON, DC # 2018-0430

PUD CONSOLIDATED SUBMISSION
February 25, 2019



STREETSCAPE : NORTH

L03

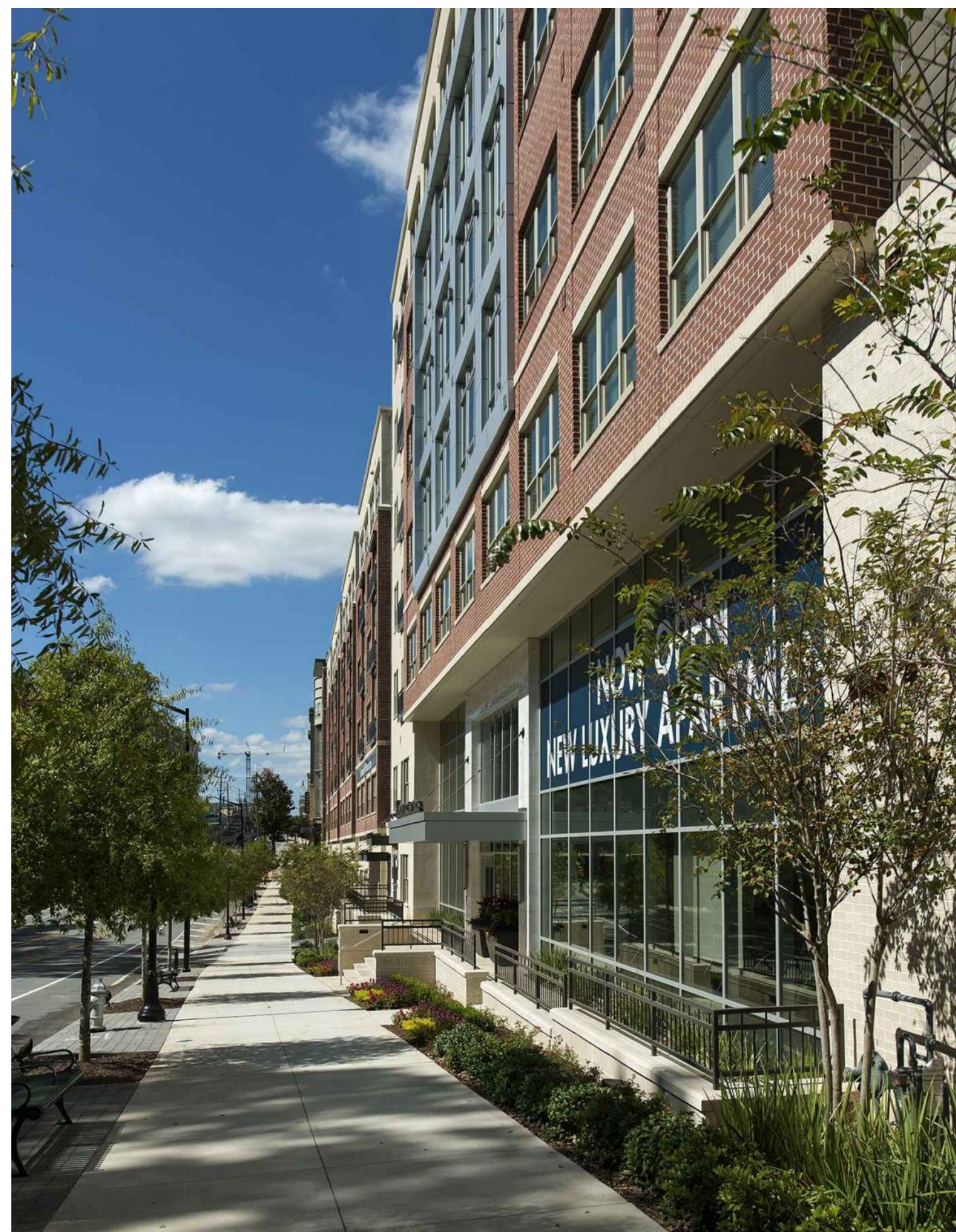




ORNAMENTAL STREET TREE



ARTIFICIAL TURF DOG RUN



EXAMPLE OF FURNITURE ZONE ADJACENT TO SIDEWALK



PEDESTRIAN POLE LIGHT



SIDEWALK CONDITION WITH STREET PLANTING AND FOUNDATION PLANTING